

## Night Vision Front Camera for Truck



**Shenzhen Jifuan Intelligent Technology Co., Ltd.**

Room 912, Building 9, West District, Zhangge  
Community, Fucheng Street, Longhua District, Shenzhen

Use 2053 color CMOS to capture moving images

Support coaxial high-definition output, the image is clear and delicate

Support digital wide dynamic range

Adaptive digital noise reduction

Support UTC function

It is made of all-aluminum alloy water-proof material and anti-demolition design.

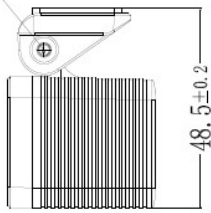
Beautiful appearance, convenient and simple installation, suitable for outdoor installation of various dangerous vehicles.

| NO.              | Front truck came 720/1080P |   |
|------------------|----------------------------|---|
| Camera parameter | sensor                     | 1/2.9 color CMOS  |
|                  | chipset                    | FH8536H+GC2053  |
|                  | View angle                 | 105°  |
|                  | pixel                      | N/A   |
|                  | Mini Illumination          | N/A   |
|                  | Shutter speed              | 1/50S-1/100000S   |
|                  | IR distance                | N/A   |
|                  | IR-Cut                     | N/A   |
|                  | Lens                       | 2.8 mm  |
| picture          | pixel                      | 1920(H)x1080(V)/1280(H)x720(V)  |
|                  | Video out                  | AHD   |
| other            | Temperature& humidity      | -20°C~+70°C 0% - 90%  |
|                  | power                      | 12V (8v-15v) (IR start)<br><2.5w  |
|                  | IP                         | IP69K   |
|                  | Video interface            | 1.0Vp-p video out, 75Ω, 4pin aviation cable<br>1:red 12V+, 2: black 12V-,<br>3: /, 4: yellow video signal |

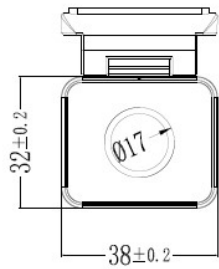




内六角M3X8 2个



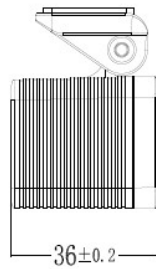
48.5 ± 0.2



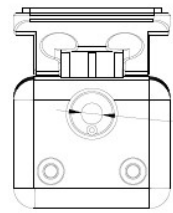
32 ± 0.2

38 ± 0.2

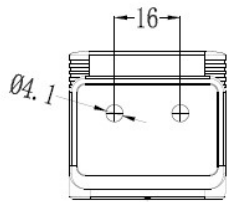
Ø17



36 ± 0.2



Ø5.15



16

Ø4.1