

# 3CHs 4G Dash Camera user manual



Front lens (1080P)



Rear lens (720P)



Interior lens (720P)

## Part 1: Item introduction

This is one 3 cams 4G dash camera and it support the GPS tracking, GPS position, WIFI hot spot, 4g network connection and equipped with SOS panic button. It use the communication protocol JT808 and JT1078 for the fleet management on the tracking platform.



- One front cam in the main dash camera(it could rotate 180 degree)
- SMA for the GPS antenna connection
- CH1 and CH2 for two external cams connection (cabin cam+ back cam in the standard package)
- indicator status

\*during the opening process,red indicator will light for 10s

\*when dash cams works well, green led will be on all the time

\*blue led: mean 4g network connection status (flash mean search the 4g network or error on the 4g connection)

\*Red led: mean the recording,when it flashes mean recording error

\*when we flash the dash camera with new firmware, red led will flash last the FW upgrade

### 1.1 Power key

-short press it, item will broadcast the WIFI hot spot name and working status

-press it for 2s- reboot the dash camera

-long press it till dash camera switch off, then red and green led will be on-  
reset to factory default

-short press: capture the photo and upload to app

-Reset hole: when we press it with one pin header, mean set it to factory default



## 1.2 SD card & SIM card

-It can support max 256G SD card with class 10, and before you use it.

We suggest to format the SD card via the app car assist app on phone.

-there is one SIM card tray in the package, please use it for the SIM card install. Then lock it as below picture,so that the cards will not drop up.



## 1.3 Record

1. insert the SD card, when we turn it on, it will begin to record automatically.

The video quality is front 1080P, back and cabin cam is 720P.

It has the G-sensor function, when there is collision it will lock the video files.

2.the cabin camera is with IR night vision function.

3.standard back cam cable is 5.6 meters in the length

## 1.4 Parking monitor

-After you close the car engine, it will enter into sleep mode.

When somethings hit the vehicle, it will send alarm message to the app,

As well as send capture photo to the app.

-via the app car assist app, you could use the video/photo capture, two ways Communication, and live video check on phone remotely.

## Part 2: FAQ

Product Questions	Solutions
1.The 3M holder could	Please check and ensure the car windshield

not firmly attached to the windshield?	is clean. And Air between the 3M adhesive and glass is squeezed out and press firmly.
2. The body of camera shakes, and the video is skewed?	Please ensure the camera and 3M holder is fastened well.
3.The video is not clear and dark?	Please ensure the camera lens or the car windshield is clean , and camera lens's shooting angle should not be too high.
4. The parking monitor function could not work?	Please check whether you connect well the power cable by correct sequence, yellow wire connect with BAT+ Long battery 12V , the Red wire connect with ACC12V.
5.The device could not be power on or normal working?	Please check whether connect well the power cable; Please check whether the wire fuse is intact; . Please use needle to short click the RESET hole to restart the device ; Or long press the power button to recover to the factory default settings.
6. The Red Led could not light up?	Check the SD card direction correct? Format SD card on app car assist. Or is the SD card with class 10 standard
7.The Blue Led is blinking?	Check whether there is 4g data in the SIM card. Check the SIM card direction
8.The Green Led could not light up?	Please check the GPS antenna connection, Make sure it face the sky

9. Forget the WiFi and password?	Short press the Power button will broadcast again the WiFi and password, and then input the correct WiFi password.
10. Mobile APP could not preview the live image or video?	Please check whether connect the correct WiFi hot spot. Power off the mobile, and restart the mobile app.

## Part 3. Car Assist Mobile APP

### 3.1 Application introduction

It supports vehicle management, vehicle monitor, mobile phone interconnection, real-time playback, one-click capture, two-way talk, video editing and share.

### 3.2 Operating conditions

Your smart device need to be with Android 4.0 or above version , or iOS device.

### 3.3 Download and installation



**Method 1:** Scan the QR code: Use the mobile phone software (such as:

WeChat, Browserect) to scan above QR code, or go to the website:

<http://www.carassist.cn> to download and install the application.

**Method 2:** Search the APP name “Car Assist” on Google Play or APP store , find this application to download and install.

### 3.4 Login to use

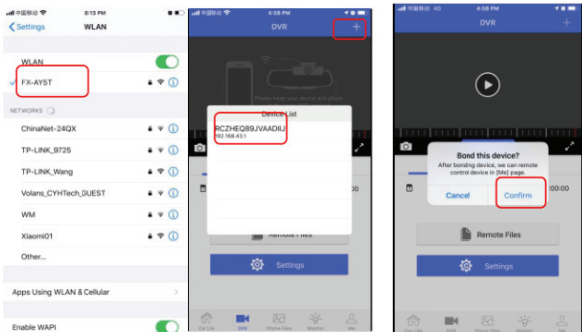
You could use Facebook ID or Wechat ID to log in the Car Assist app.

### 3.5 Device binding and management

Find this device's WiFi hot spot in the mobile phone and connected it.

(WIFI hot spot name defaults to FX-xxxx, default password is 12345678.

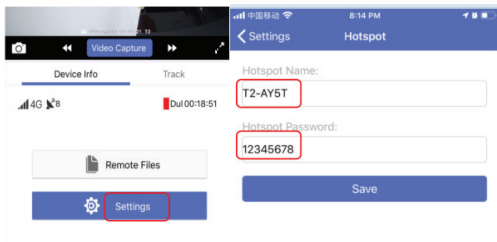
Open the CarAssist app, click the "+" in the upper right corner, the following dialog box will pop up, click the serial number, click “Confirm ” option to send the binding request to the device, and then short press the Power Button of dash camera to agree the binding request.





When the binding the mobile with dash camera, please don't forget to press the power button to agree the binding request.

Plus, users can modify the dash camera's wifi hotspot name and password in the Car Assist app settings.



### 3.6 Vehicle management:

One user (account) can be connected with multiple devices (dash camera). One dash camera device can be connected with multiple users at the same time. Plus, you can freely re-name the device to distinguish different camera device, as below image:



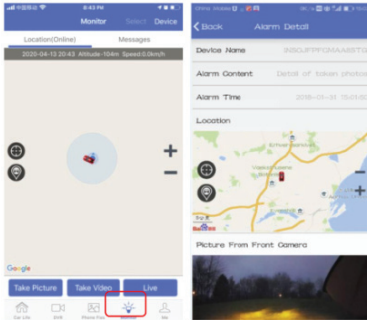


### 3.7 Cloud functions description

**(Please make sure the dash camera and phone are connect to different 4g network)**

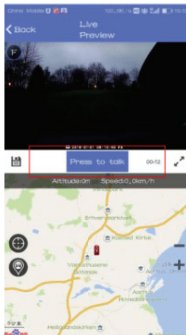
#### ●Vehicle Monitoring Alarm

When something hit or collision happened to the device, and you want to see what happened to the car, then you could open the Car Assist app's Monitor function to remotely "Take picture" or "Take Video" to see the situations. The device will capture a 720P picture / 10S video of the front and inside cameras in a short time, and upload (takes 5S-10S) to the binding mobile phone. At the same time, the file is saved in the snapshot folder of the phone file. Users can browse from their mobile phones at any time, edit it and share, as below image:



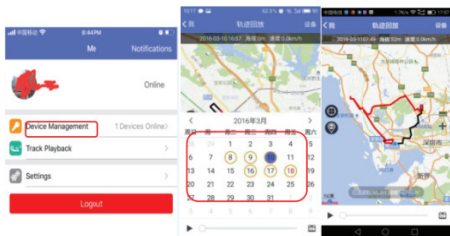
### ●Remote Live Intercom (Two-Way Talk)

Enter the Live menu, user could live view and intercom remotely with driver anytime anywhere, just click the "Press to talk" button. Plus, you could save the video file as you want when live view.



## ●GPS Track playback

User can enter the “Track Playback” to check the vehicle location and playback the car driving GPS trace in the past day or any previous date & time. Different time GPS traces will be marked with different colors and then be distinguished, as below:



**Dual screen interconnection display with smart device (Mobile Phone / Android DVD player), please connect device's WiFi hot spot firstly and ensure at the same network.**

After mobile connecting this device's WiFi hot spot, then you could enter the “DVR” menu to see video and image from device. This function is based on WiFi interconnection, no need network traffic data support.

## ●Real-Time 1080P /720P Preview Playback

Users can preview 1080P /720P driving videos (full screen) in real time through their mobile phones. And could playback any video files anytime.

## ●One-Click Video Capture

In the preview interface, users could click “Video Capture” button to take one

10 seconds duration video file (-5s, +5s) .

### ●Quick Settings

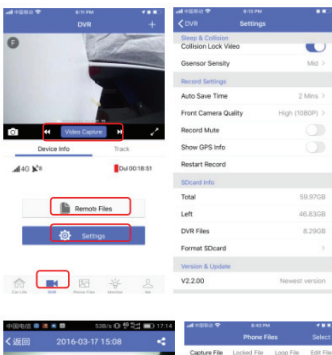
Users can enter the “Settings” menu to make quick settings, like adjust volume, G-Sensor sensitivity, loop recording time, record mute, WiFi name and password, and so on.

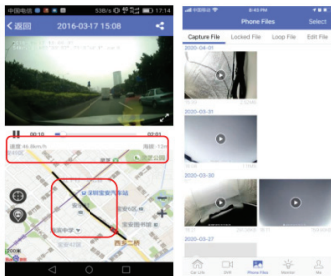
### ●Record Video in Real Time with GPS data information

All video files are come with date & time, speed and GPS log information in real time.

### ●Real-Time Playback

Users can preview any video files from device in real time through the CarAssist APP, and can choose view online (buffer 1-3 seconds). If long-press the video file, it could be downloaded into the corresponding folder of mobile phone, no need network traffic data support, and you could edit and share the video files.





### ●Enjoy Smart Driving: Car Life Community

The Car Assist app is built-in one car life cloud community, based on intelligent cloud reading, users can edit video files (snapshots or videos) and share the video in this car life zone.



### Part 4: Product Specifications

Product Parameter	
CPU	Spreadtrum SL8541E Quad core Cortex-A53@1.4GHz+S206

OS		Android 8.1
Storage	Flash ROM	32GB EMMC
	RAM	2GB LPDDR3
GPS		GPS&BD Dual Band, With External GPS antenna
Network Band		GSM:B5/B3/B8; WCDMA:B1/B5/B8; TDD-LTE:B38(2600)/B39(1900)/B40(2300)/B41(2500); FDD-LTE:B1(2100)/B3(1800)/B5(850)/B8(900)
WiFi		802.11ac/b/g/n 2.4G&5G; Support WiFi hotspot
G-Sensor		6-axis G-Sensor
Loop Recording		Support
Parking Monitor		Support
Front Camera		GC2053(1920x1080P), MIPI interface
Inside Camera		GC2053 (1280x720P), IR(850); MIPI interface
Back camera		GC2053 (1280x720P),MIPI interface
IR Night Vision		Support Infrared light in Inside Camera
SOS		Support one-key click alarm
Standby power consumption		4MAH
Input/Output	Speaker	Built-in high-fidelity mono 8Ω2W speaker

	MIC	Build in MIC-Phone Noise Reduction
	TF card	Support TF card, maximum 256GB (not include)
	USB	Micro USB 2.0
Key button		Power button
RESET		Support
powered by	External power	It is hardwired to the vehicle's fuse panel; power supply voltage 9V-16V.
Temperature and humidity range	Temperature	Usage: -20~+70°C
		Storage: -30~+80°C
	humidity	Usage: 4%~90%RH
		Storage: 40%RH
Package		1xdash camera,1xback camera, 1xIR inside cam,1xpower cable;1xGPS antenna,1x3M holder,1xuser manual
<b>Car Assist App for Android/ iOS</b>		
Parking Monitor		Support capture front/inside/ back camera video and image.
Real-time preview		Support 1080p/720p video live preview.
GPS track history		Support GPS logger path and video synchronous playback.
Monitor and Alarm		Support Message / photo alarm if collision happened when car parking.
Video download		Support Point-to-point video download to the phone, don't consume internet data.

